

Docker Piaware / FlightAware Installation

Quelle: <https://github.com/sdr-enthusiasts/docker-piaware/pkgs/container/docker-piaware>

```
version: '2.0'

services:
  piaware:
    image: ghcr.io/sdr-enthusiasts/docker-piaware:latest
    tty: true
    container_name: piaware
    restart: always
    devices:
      - /dev/bus/usb:/dev/bus/usb
    ports:
      - 8084:80
      - 30003:30003
      - 30005:30005
    environment:
      - TZ="Europe/Berlin"
      - FEEDER_ID=XXXXX-XXXXX-XXXXX-XXXX
      - RECEIVER_TYPE=rtlsdr
    tmpfs:
      - /run:exec,size=64M
      - /var/log
```

FlightAware

PiAware Status

This is a PiAware ADS-B feeder. For more information visit flightaware.com. Below you can view information to determine if your site is functioning properly.

1090 Radio

PiAware

FlightAware

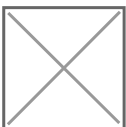
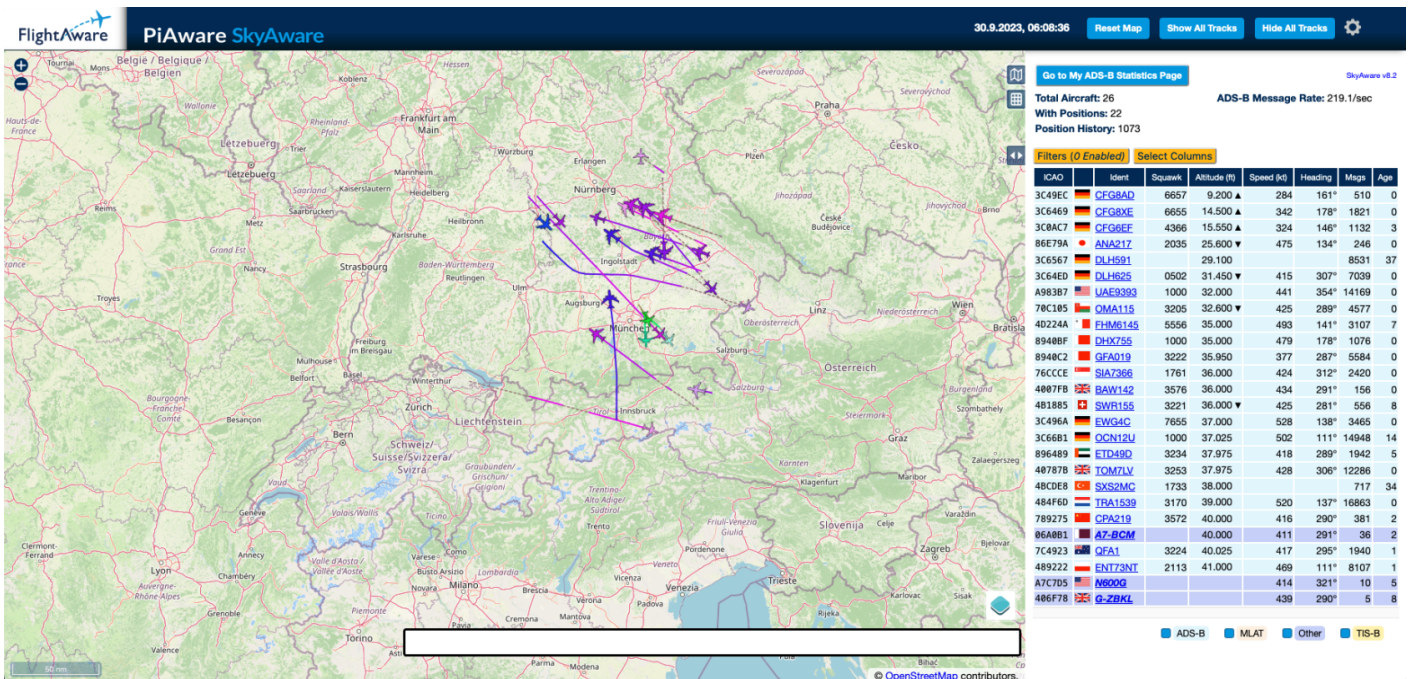
MLAT

PiAware Version: 8.2
Dump1090-fa Version: N/A
Dump978-fa Version: N/A

CPU Temperature: 46.7 C
CPU Load: 28%
System Uptime: 6 days, 18 hours 35 minutes

[View your site statistics online.](#)

[Go to SkyAware Map](#)



Revision #1

Created 29 November 2023 15:05:12 by Joachim Hummel

Updated 29 November 2023 15:06:50 by Joachim Hummel