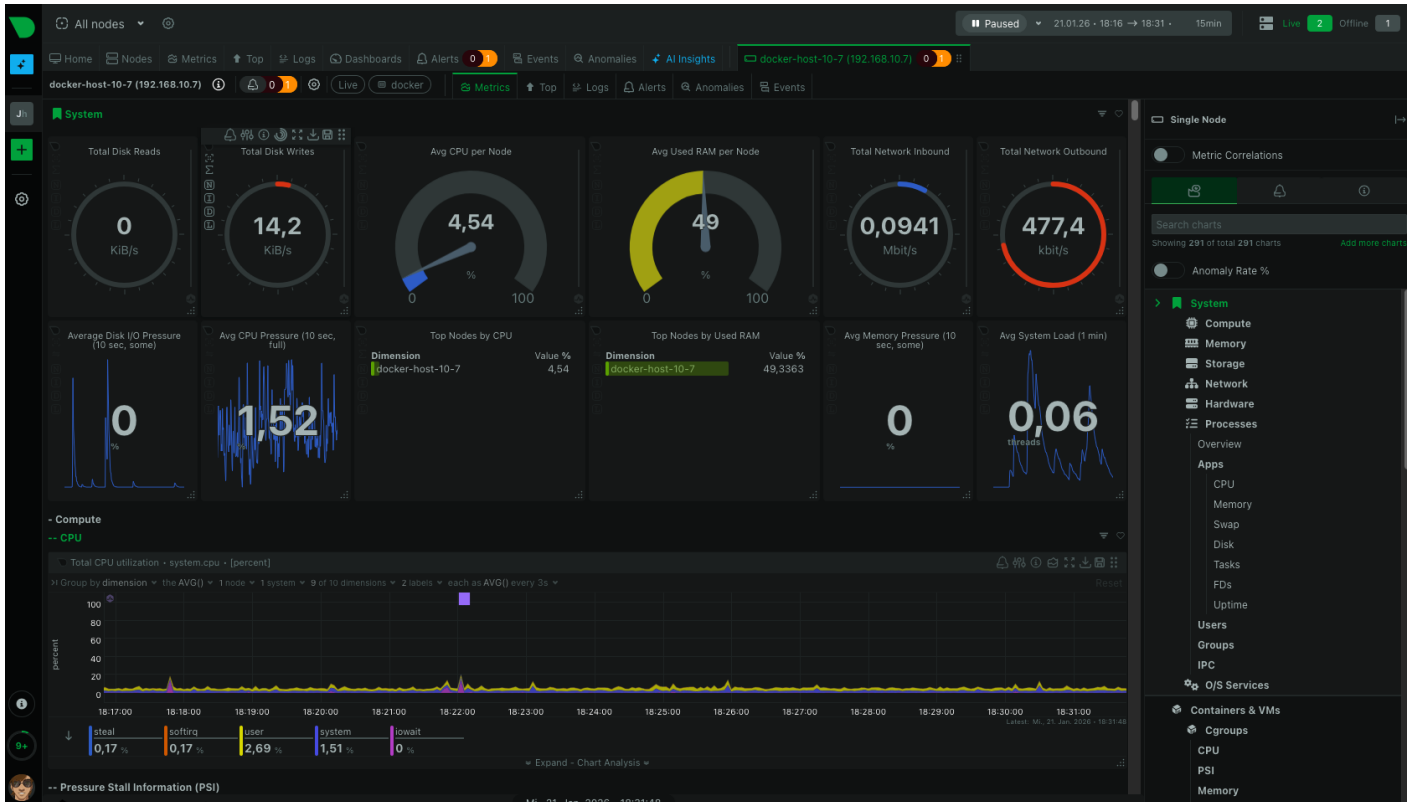


Netdata

NetData Server / Agent



services:

netdata:

image: netdata/netdata:stable

container_name: netdata-agent

hostname: docker-host-10-58

pid: host

network_mode: host

restart: unless-stopped

cap_add:

- SYS_PTRACE

- SYS_ADMIN

security_opt:

- apparmor:unconfined

```
volumes:
  - netdataconfig:/etc/netdata
  - netdatalib:/var/lib/netdata
  - netdatacache:/var/cache/netdata

  - /:/host/root:ro,rslave
  - /etc/passwd:/host/etc/passwd:ro
  - /etc/group:/host/etc/group:ro
  - /etc/localtime:/etc/localtime:ro
  - /proc:/host/proc:ro
  - /sys:/host/sys:ro
  - /etc/os-release:/host/etc/os-release:ro
  - /var/log:/host/var/log:ro
  - /var/run/docker.sock:/var/run/docker.sock:ro
  - /run/dbus:/run/dbus:ro
```

```
volumes:
  netdataconfig:
  netdatalib:
  netdatacache:
```

Netdata Agent Konfiguration /etc/netdata/orig/stream.conf

```
[stream]
enabled = yes
destination = 192.168.10.71
api key = docker-host-10-58
timeout seconds = 60
send charts matching = *
```

Netdata Konfiguration Server: /etc/netdata/orig/stream.conf

```
[stream]
enabled = yes

[docker-host-10-7]
enabled = yes
default history = 3600
health enabled = yes
```

```
[docker-host-10-58]
```

```
enabled = yes
```

```
default history = 3600
```

```
health enabled = yes
```

Revision #4

Created 21 January 2026 17:26:00 by Joachim Hummel

Updated 21 January 2026 17:33:30 by Joachim Hummel